

FOCUSED on
DESIGN and
QUALITY

LIKAMED®



SALSA[®]

LIKAMED welcomes you to experience a new line of ...



SALSA[®]

Therapy chairs for multiple clinical purposes

SALSA®

Therapy chairs A1, A2, A3, A4



The new line of LIKAMED SALSA® therapy chairs scores with a convincing level of versatility and efficiency meeting today's clinical and economical efforts in health care. Reduced to essential and relevant features the line's model and design concept leaves no questions open in patients' comfort or safety. The new range stretches from the versatile compact couch SALSA® A1 to a non-compromising functional couch SALSA® A4.

SALSA®

Therapy chairs A1, A2, A3, A4



Focused on requirements such as ergonomics and comfort, intuitive handling, mobility and stability even at heavy patients weights as well as time-saving hygiene routines for the personnel makes SALSA® the ideal couch solution for clinic and surgery: dialysis, blood donation, oncology, infusion and transfusion therapy, ENT clinics, eye hospitals, pain clinics, orthopaedic centres and many more.



SALSA[®] A1

Compact couch for medical treatment



SALSA[®] A1

- > Compact and versatile for personnel and patient:
 - > Stepless motorised adjustment from sitting to shock position
 - > Foam armrests, fold up and rotatable
 - > Hand control unit with initial positions button (sitting and shock position), manual locking



SALSA[®] A2

Therapy chair with convincing quality



SALSA[®] A2

- > Basic couch for all kinds of medical treatment:
 - > Stepless motorised adjustment from sitting to shock position
 - > Foam armrests, fold up and rotatable
 - > Hand control unit with initial positions button (sitting and shock position), magnetical locking



SALSA[®] A3

Therapy chair with functional flexibility



SALSA[®] A3

- > Advanced couch for all kinds of medical treatment:
 - > Stepless motorised adjustment from sitting, comfort and bed position to shock or Trendelenburg position
 - > Foam armrests, fold up, rotatable and tiltable
 - > Hand control unit with initial positions button (sitting and shock/Trendelenburg position), magnetical locking



SALSA[®] A4

Therapy chair as perfect composition of design and comfort



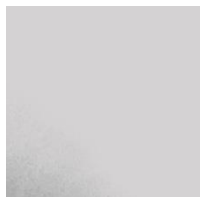
SALSA[®] A4

- > Premium couch for all kinds of medical treatment:
 - > Stepless motorised adjustment from sitting, comfort and bed position to shock or Trendelenburg position
 - > Foam armrests, fold up, rotatable and tiltable
 - > Hand control unit with initial positions button (sitting and shock/Trendelenburg position), magnetical locking

SALSA®

Therapy chairs for multiple clinical purposes

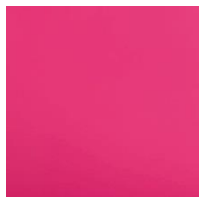
Variety on demand



stone



azure



raspberry



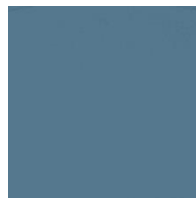
saffron



kiwi



light grey



pastel blue

7 different colours on demand for upholstery and neck roll, neck roll always in upholstery colour

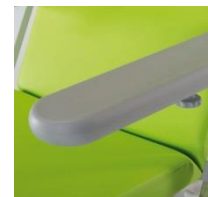
Versatility and functionality



Homogeneous surfaces for quick and safe cleaning and hygiene routines



Hand control



Armrests



Safe working load of 200 kg



Comfortable upholstery

SALSA®



> SALSA® therapy chairs promise quality from day one and represent excellent value

Compact, versatile and comfortable therapy chairs

Customised features	SALSA A1	SALSA A2	SALSA A3	SALSA A4
Safe working load of 200 kg	■	■	■	■
Sitting and shock position	—	■	—	—
Sitting, comfort and shock position	■	—	—	—
Sitting, comfort, bed, shock and Trendelenburg position	—	—	■	■
Stepless adjustment of positions	■	■	■	■
Hand control unit for stepless adjustment	■	■	■	■
Manually adjustable footrest	■	■	■	■
Fold-up and rotatable foam armrests	■	■	■	■
Tiltable foam armrests	□	□	■	■
Individually lockable castors Ø 7.5 cm	■	■	■	■
Individually lockable castors Ø 10.0 cm	□	□	□	□
Comfortable soft upholstery	■	■	■	■
Neck roll in upholstery colour	■	■	■	■
Neck roll in additional colour	□	□	□	□
Colour metall frame and cover Light Grey RAL 7047	■	■	■	■
Colour footrest and armrest Dark Grey	■	■	■	■
Other options: wedge-shaped armrest, paper roll holder, transparent covers (footpart, footstep, armrest), Jersey covers (mattress, neck roll, armrest), infusion bag holder				
■ Standard □ Optional				



- > SALSA® therapy chairs are checked, tested and certified by independent proof organisations

Functionality and safety for patients comfort

Technical data	SALSA A1	SALSA A2	SALSA A3	SALSA A4
Size, length x width	199.5 x 80.8 cm	230.9 x 80.8 cm	229.3 x 80.8 x cm	229.1 x 80.8 cm
Armrests, length x width	60.0 x 13.5 cm	60.0 x 13.5 cm	60.0 x 13.5 cm	60.0 x 13.5 cm
Mattress, length x width x height	210.0 x 53.5 x 7.0 cm	210.0 x 53.5 x 7.0 cm	210.0 x 53.5 x 7.0 cm	210.0 x 53.5 x 7.0 cm
Access height	64.0 cm	65.0 cm	63.5 cm	56.5 – 68.0 cm
Angle of incline, seat part	4 °	9 °	0 °	0 °
Power rating, primary	100 -240 V, 50/60 Hz	100 -240 V, 50/60 Hz	100 -240 V, 50/60 Hz	100 -240 V, 50/60 Hz
Electric safety under	EN/IEC 60601-1	EN/IEC 60601-1	EN/IEC 60601-1	EN/IEC 60601-1
Electromagnetic compatibility (EMV) under	EN/IEC 60601-1-2	EN/IEC 60601-1-2	EN/IEC 60601-1-2	EN/IEC 60601-1-2
Medical device class under				
93/42 EWG	Class I	Class I	Class I	Class I
Protection class under EN/IEC 60601-1	II	II	II	II
Application part	Type B	Type B	Type B	Type B
Protection type	IP X4	IP X4	IP X4	IP X4
CE classification under	CE	CE	CE	CE
93/42 EWG (MDD)				
Emission sound pressure level	> 65 dB(A)	> 65 dB(A)	> 65 dB(A)	> 65 dB(A)
Environmental conditions				
Temperature	10 – 40 °C	10 – 40 °C	10 – 40 °C	10 – 40 °C
Humidity	30 – 75 % r.F.	30 – 75 % r.F.	30 – 75 % r.F.	30 – 75 % r.F.
Air pressure	800 – 1060 hPa	800 – 1060 hPa	800 – 1060 hPa	800 – 1060 hPa
Weight	app. 50 kg	app. 55 kg	app. 60 kg	app. 60 kg



SALSA[®]

New line of LIKAMED therapy chairs for clinic and surgery



YOUR
PARTNER IN
COMFORT

LIKAMED®